

Summary of CEMARS certification:



Villa Maria Estate Ltd

Villa Maria Estate Ltd meets the requirements of CEMARS™ certification having measured its greenhouse gas emissions compliance with ISO 14064-1 and committed to reducing its emissions in respect of the operational activities of its organisation excluding overseas retail and distribution.



in

VILLA MARIA
ESTATE

Introduction¹ – Villa Maria was founded in 1961 in Auckland and is New Zealand's most awarded winery. The Auckland winery was opened in 2005 and hosts Villa Maria's head office, bottling facility, conference and events centre and cellar door. Internationally acclaimed wine is produced from grapes grown in New Zealand's main grape growing regions, with owned vineyards in Marlborough, Hawkes Bay, Gisborne and Auckland. Grapes are also sourced from contract growers. Villa Maria distributes wine throughout New Zealand as well as Europe, North America, Australia, Asia and the Caribbean and Pacific Islands.

Villa Maria has a long held objective to be environmentally responsible and to operate using sustainable practices. Villa Maria has been a member of Sustainable Winegrowing New Zealand (SWNZ) since its inception in 1995. Each year, Villa Maria is audited by SWNZ to provide a key platform for continuous improvement. All Villa Maria company vineyards and winery sites are either accredited by SWNZ or in the case of new sites, in the process of gaining accreditation.

In addition to SWNZ, all Villa Maria's wineries are compliant with the environmental management system - ISO14001. Villa Maria is committed to continuing along the path of sustainability.

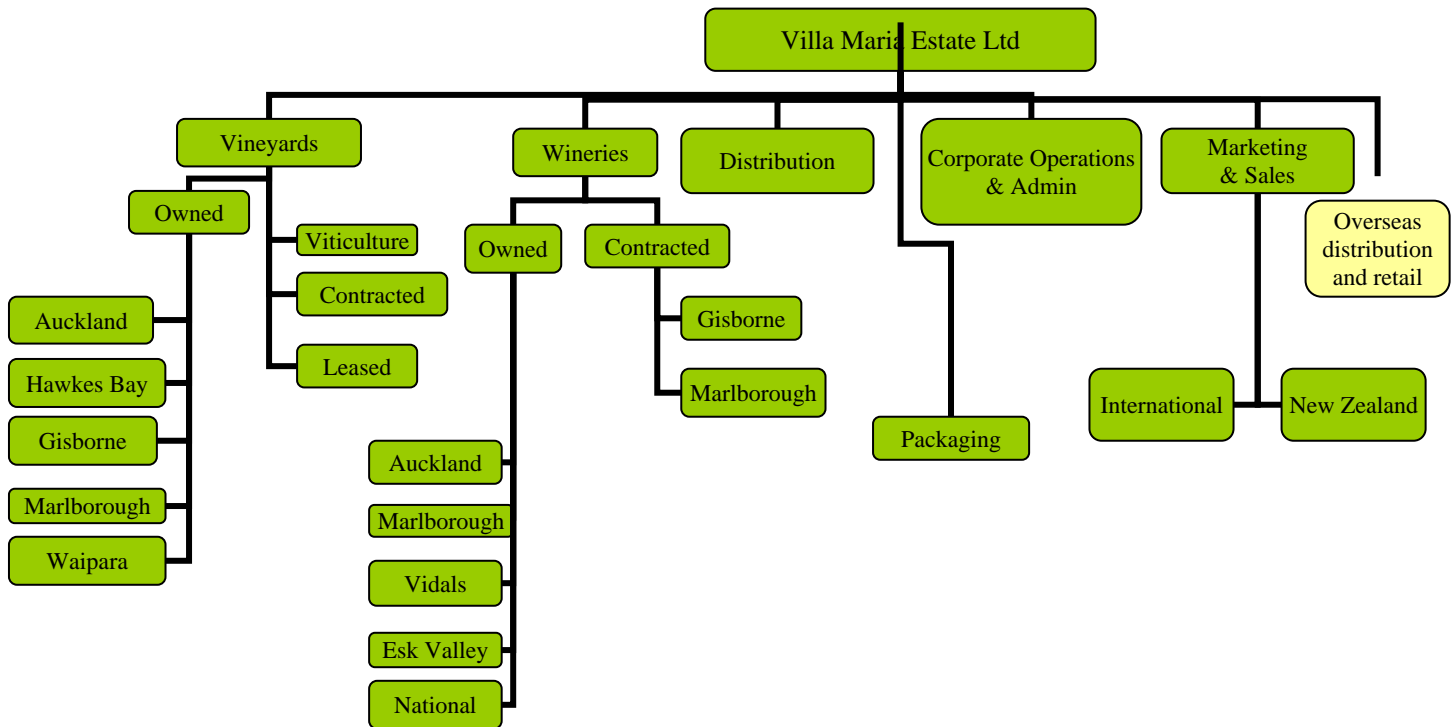
Boundary – the diagram below shows the organisational structure used for describing Villa Maria Estate Ltd's greenhouse gas (GHG) emissions inventory, and what business units were included in the CEMARS certification. Yellow business units were excluded from the certification.

¹ **Disclaimer:** This Disclosure Statement is a summary of the verified information considered for certification and the certification decision. It should not be taken to represent the full submission for certification. While every effort has been made to ensure that the information in this Disclosure Statement is accurate and complete, Landcare Research does not, to the maximum extent permitted by law, give any warranty or guarantee relating to the accuracy or reliability of the information.

Summary of CEMARS certification:



Villa Maria Estate Ltd



Consolidation approach – operational control

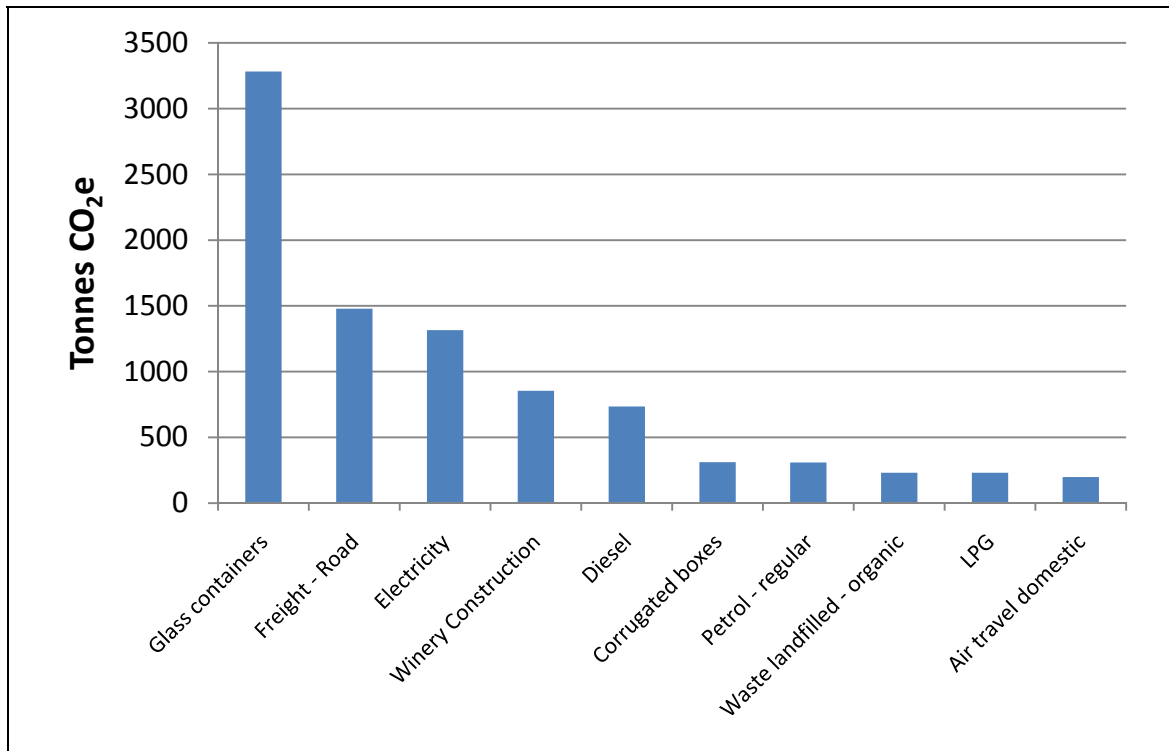
Base year – 01/06/2008 to 31/05/2009

Measurement period – 01/06/2008 to 31/05/2009

GHG emissions source inclusions – the diagram below shows the operational GHG emissions for Villa Maria Estate Ltd by emissions source. Villa Maria Estate Ltd's total emissions for this period were 9509.31 tonnes carbon dioxide equivalents (CO₂e) comprising 897.00 tonnes CO₂e Scope 1, 1161.18 tonnes CO₂e Scope 2 and 6597.36 tonnes CO₂e Scope 3 emissions, there was also 853.77 tonnes CO₂e one-off emissions from the Marlborough winery construction.

Summary of CEMARS certification:

Villa Maria Estate Ltd



GHG emissions source exclusions – CO₂ gas used in the winery and organic waste from wine making was excluded due to lack of data on quantities produced. Materials used in Contract Bottling at Auckland were excluded as this was paid and provided by 3rd Parties. Some GHG emission sources were excluded as they are not required for an organisational footprint such as the embodied emissions in fertilisers. Freight of goods after leaving New Zealand ports was excluded either because it was not under operational control or based on its *de minimis* value.

GHG emissions reduction commitments – Villa Maria Estate Ltd has developed a GHG emissions reduction plan. Some projects in this plan include:

- Reduce emission intensity for wine bottled in glass containers
- Review mode of transportation used for freight
- Minimise use of refrigerants in wineries
- Review purchasing of new vehicle fleet

Verified by – Verification NZ

Threshold of materiality – excluded emissions do not exceed 5% of the total footprint for organisation and product boundary stated.

Level of assurance – reasonable assurance for organisational emissions and no assurance given for one-off winery construction emissions.

Certification status – CEMARS certified “organisation”

Certificate number – 2010015J

Summary of CEMARS certification:

Villa Maria Estate Ltd



Valid until – 31 August 2010

Villa Maria Estate Ltd
118 Montgomerie Road, Mangere, Auckland, 2022, New Zealand
enquiries@villamaria.co.nz
www.villamaria.co.nz
+64 09 255 0660