

# Summary of CEMARS certification:



## Toyota New Zealand

*Toyota New Zealand Ltd meets the requirements of CEMARS® certification having measured its greenhouse gas emissions in compliance with the requirements of ISO 14064-1 and committed to managing and reducing its emissions in respect of the operational activities of its organisation including freight.*



**Introduction<sup>1</sup>** – Toyota New Zealand Ltd's principal business activities include:

- Importation to, and distribution within, New Zealand of new motor vehicles from the parent company (Toyota Motor Corporation) in Japan and from related companies in Europe, Australia and Thailand.
- The sale of new motor vehicles to the franchised dealer network and directly to major fleet customers.
- The sale of a range of after-market products distributed from the National Customer Centre at Palmerston North, including replacement parts, accessories, extended warranties and service contracts.
- The refurbishment and sale of used imported and ex-lease used vehicles at the Thames Signature Class facility.

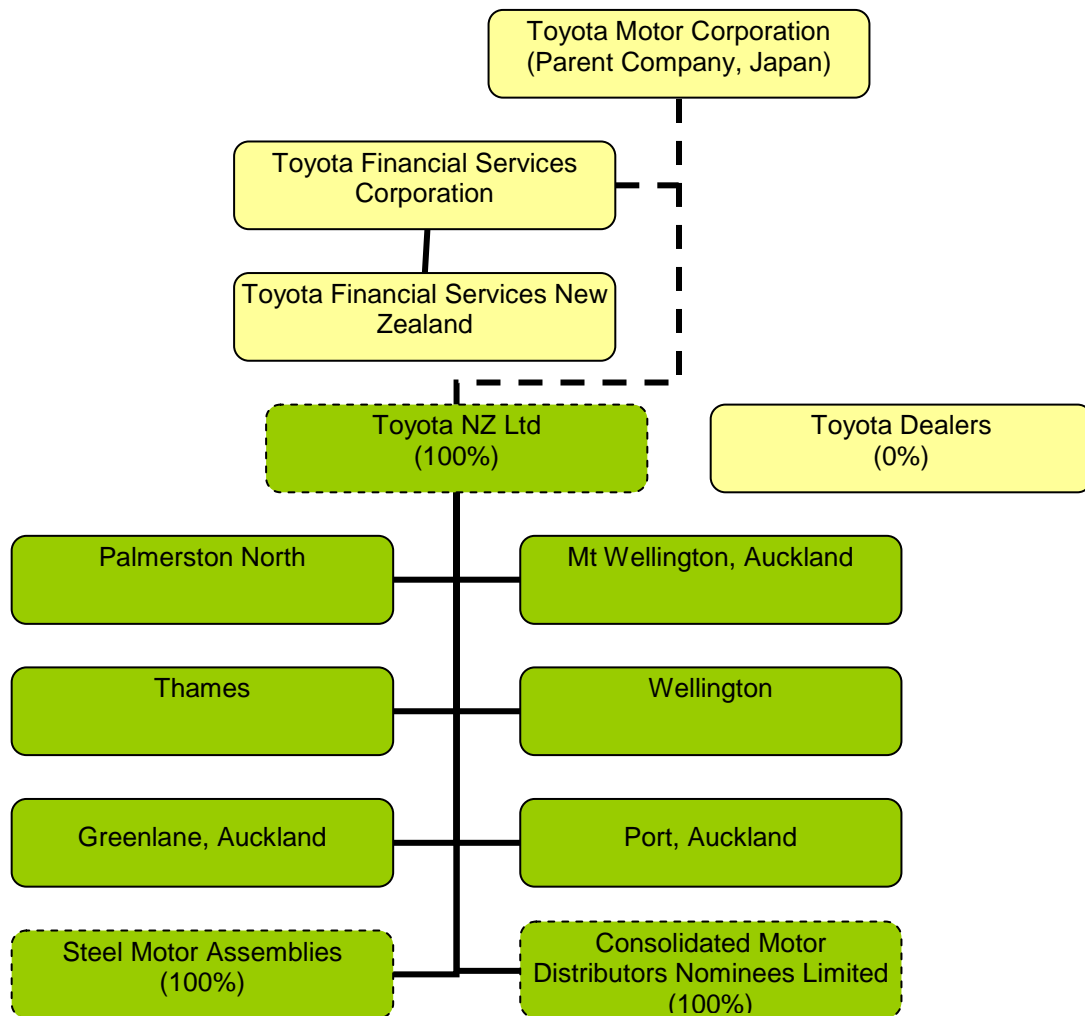
**Boundary** – the diagram below shows the organisational structure used for describing Toyota New Zealand Ltd's greenhouse gas (GHG) emissions inventory, and what business units were included in the CEMARS certification. Yellow business units were excluded from the certification.

---

<sup>1</sup> **Disclaimer:** This Disclosure Statement is a summary of the verified information considered for certification and the certification decision. It should not be taken to represent the full submission for certification. While every effort has been made to ensure that the information in this Disclosure Statement is accurate and complete, Landcare Research does not, to the maximum extent permitted by law, give any warranty or guarantee relating to the accuracy or reliability of the information.

# Summary of CEMARS certification:

## Toyota New Zealand



**Consolidation approach** – operational control

**Base year** – 01/4/2008 to 31/3/2009

**Measurement period** – 01/4/2008 to 31/3/2009

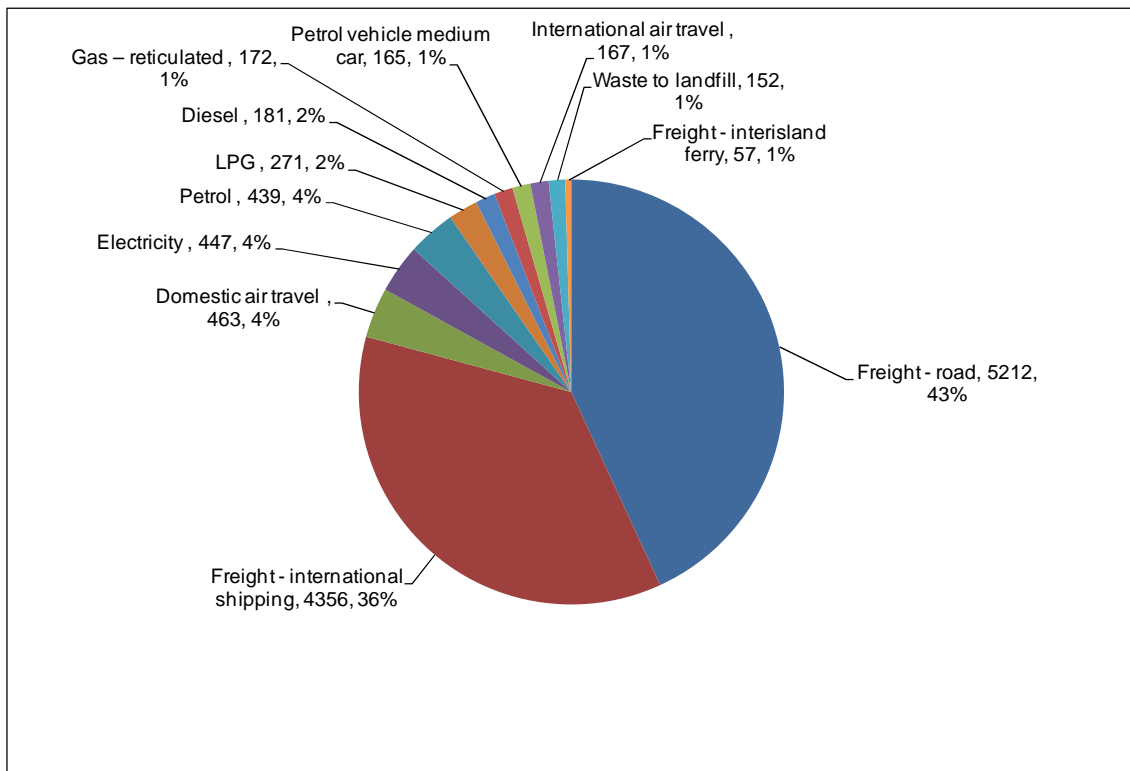
**GHG emissions source inclusions** – the diagram below shows the operational GHG emissions for Toyota New Zealand Ltd by emissions source. Toyota New Zealand Ltd's total emissions for this period were 12,173 tonnes carbon dioxide equivalents (CO<sub>2</sub>e), comprising 1,319 tonnes CO<sub>2</sub>e Scope 1, 446 tonnes CO<sub>2</sub>e Scope 2 and 10,409 tonnes CO<sub>2</sub>e Scope 3 emissions.

Note: Toyota New Zealand have chosen to measure but exclude the emissions sources associated with vehicle freight from their carboNZero certification. Please see refer to the separate carboNZero "certified organisation" disclosure page. These emissions sources will continue to be measured and managed as part of the entire CEMARS inventory.

# Summary of CEMARS certification:



## Toyota New Zealand



**GHG emissions source exclusions** – The following emissions sources were excluded from the emissions inventory:

- Staff taxi travel
- Freight of vehicle parts
- Solvents
- Paint application

**GHG emissions reduction commitments** – Toyota New Zealand Ltd has developed a GHG emissions reduction plan. Some projects in this plan include:

- Continue energy saving measures and on-going vigilance of existing efforts introduced across TNZ premises;
- Continued promotion of individual staff actions which can reduce power and progress reporting towards end of year target;
- Continued focus on reducing business travel (less trips) and promotion of alternatives;
- Staff incentives to choose efficient models;
- Improved vehicle fuel economy of vehicles introduced into company fleet and continued promotion of fuel saving driving techniques.

# Summary of CEMARS certification:

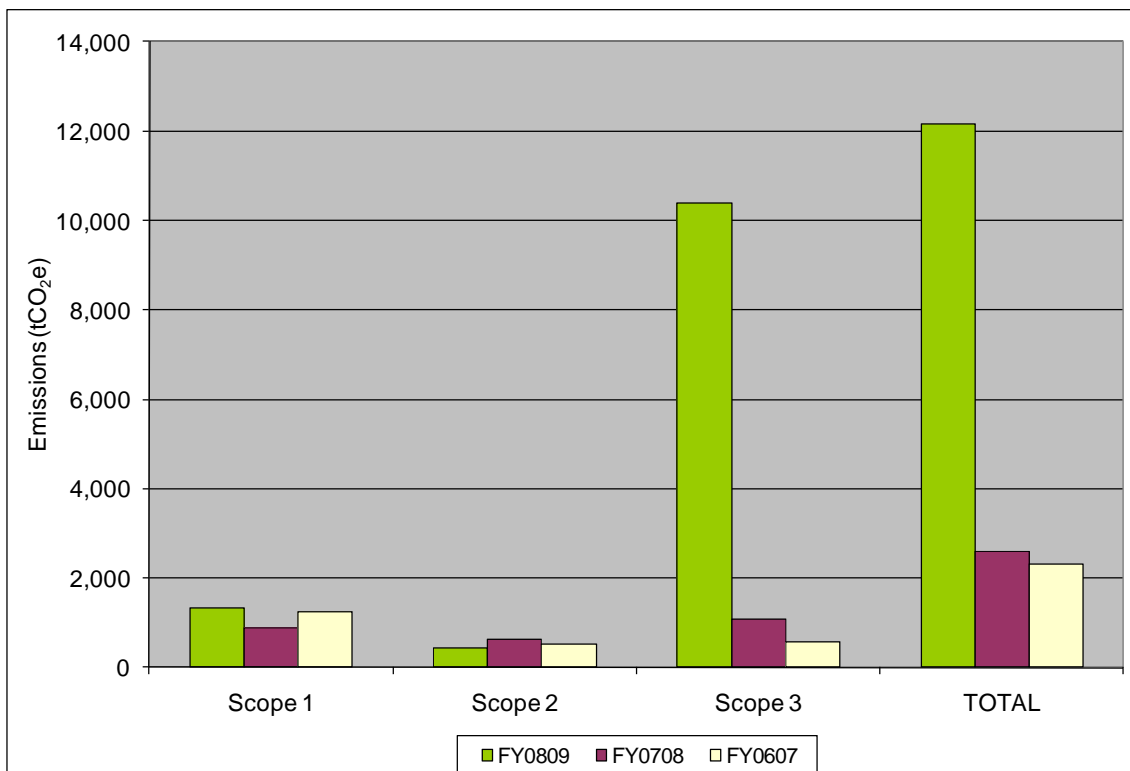


## Toyota New Zealand

### GHG emissions reduction report against last year's plan –

Total GHG emissions for the period were 12,173 tCO<sub>2</sub>e, compared to 2,504 tCO<sub>2</sub>e for the base year (FY2006/07). This is a significant increase, but is largely due to the inclusion of vehicle freight (of used and new vehicle imports) in the measured emissions sources in this latest reporting period, and to a very minor extent the inclusion of waste to landfill and refrigerant emissions sources. A comparison based on the range of emissions sources included in the measurement for both reporting periods shows that emissions for the total of these sources has decreased by 166 tCO<sub>2</sub>e (9%) compared to the base year, and by 386 tCO<sub>2</sub>e (18%) compared to the previous (FY2007/08) year.

Emission reductions from the base year were achieved in this reporting period from all sources except petrol and international air travel. The following diagram illustrates the comparison between Scope 1, Scope 2 and Scope 3 emissions for the three reporting periods to date.



# Summary of CEMARS certification:



## Toyota New Zealand

**Verified by** – AsureQuality

**Threshold of materiality** – excluded emissions do not exceed 5% of the total footprint for organisation and product boundary stated.

**Level of assurance** – reasonable assurance

**Certification status** – CEMARS certified “organisation” covering Toyota New Zealand’s organisational GHG emissions, excluding vehicle freight.

**Certificate number** – 2010036J

**Valid until** – 30 June 2010

Toyota NZ Ltd, National Customer Centre, PO Box 46, Roberts Line, Palmerston North 4440  
0800 869682, [info@toyota.co.nz](mailto:info@toyota.co.nz), [www.toyota.co.nz](http://www.toyota.co.nz) .