

## Summary of CEMARS certification:



### Al Maha Desert Resort & Spa

*Al Maha Desert Resort & Spa meets the requirements of CEMARS certification having:*

- *measured its greenhouse gas emissions in compliance with ISO 14064-1:2006*
- *committed to managing and reducing its emissions*



**Al Maha**  
DESERT RESORT & SPA

**Introduction<sup>1</sup>** – Al Maha Desert Resort & Spa is a luxury resort and nature reserve located approximately 65km by road from Dubai. The property is located within the Dubai Desert Conservation Reserve (DDCR) (approximately 225 square kilometres - five per cent of Dubai's total land area), and is the largest protected land area under conservation management in the Gulf region, and the only one of its kind in the Middle East. The accommodation area occupies 2% of the total land area.

The resort was established approximately 10 years ago. The resort complex can accommodate a maximum of 96 guests, and consists of 42 free-standing suites, plus additional buildings for activities such as dining, recreation, and spa facilities (reception building and restaurant, boardroom, and Timeless Spa). The initial development consisted of 30 villas. A further 12 villas were developed a few years later to give a total of 42 villas: 37 Bedouin suites, 1 Presidential suite, 2 Emirates suites and 2 Royal suites.

Additional staff accommodation (capacity for 216 staff) and support buildings are also located on the property, with 150 staff members living on the site.

Guests are able to participate in activities on the property including wildlife drives, horse riding, nature walks, desert safaris, camel trekking, falconry, gymnasium activities, swimming pool, and archery.

Al Maha Desert Resort & Spa is committed to conservation of the surrounding environment. This includes large scale habitat rehabilitation programs, including the propagation of over 6,000 indigenous trees, shrubs and grasses, and the re-introduction of the regions' first free-roaming herds of endangered Oryx and many other indigenous wildlife species. Three bore-holes on the reserve provide all the resort water from one of the largest remaining freshwater aquifers in the region. Waste water is treated, and later used for irrigation around the resort. Both mechanical and kitchen oils, as well as organic wastes, are gathered and disposed of daily by recycling contractors (composting onsite is not an option, as this would introduce unacceptable levels of nutrients into the reserve). In addition, all office paper and cardboard packaging materials are recycled.

---

<sup>1</sup> **Disclaimer:** This Disclosure Statement is a summary of the verified information considered for certification and the certification decision. It should not be taken to represent the full submission for certification. While every effort has been made to ensure that the information in this Disclosure Statement is accurate and complete, Landcare Research does not, to the maximum extent permitted by law, give any warranty or guarantee relating to the accuracy or reliability of the information.

# Summary of CEMARS certification:



## Al Maha Desert Resort & Spa

Al Maha Desert Resort & Spa are in charge of some management operations related to the DDCR, as part of their agreement for operating the resort on the DDCR land.

**Boundary** – the diagram below shows the organisational structure used for describing Emirates Al Maha Desert Resort & Spa’s greenhouse gas (GHG) emissions inventory, and what business units were included in the carboNZero certification. Yellow business units were excluded from the certification.

Figure 2 shows the emissions sources for the organisation in the context of the service (i.e. guest experience). Emissions sources in green have been included, and sources in yellow were excluded.

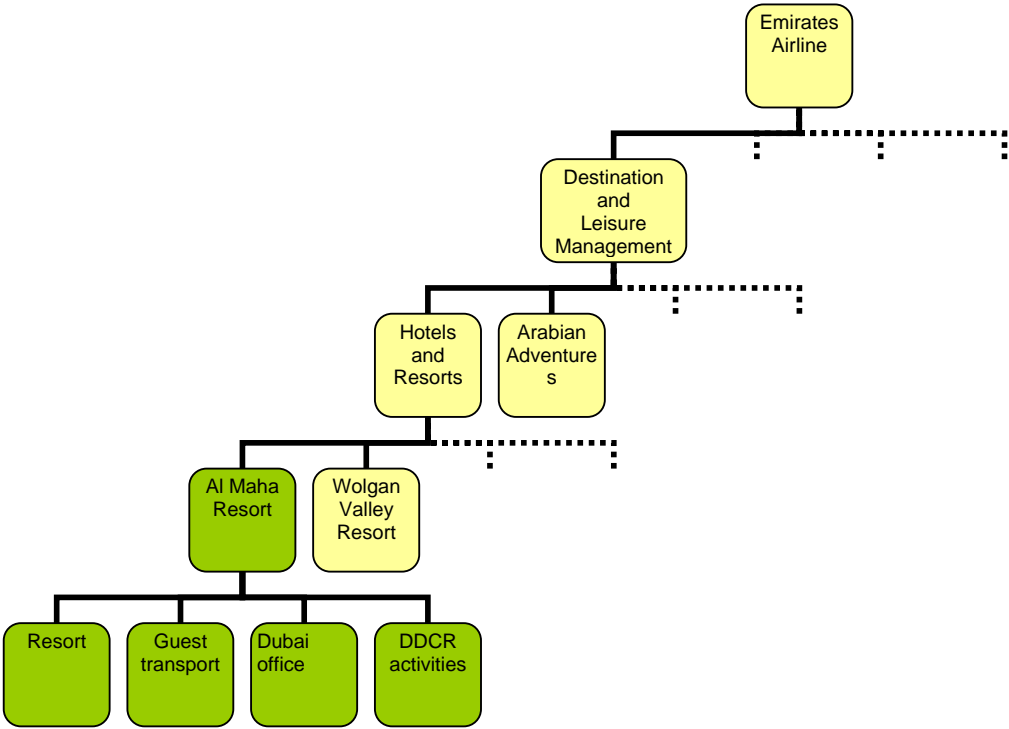
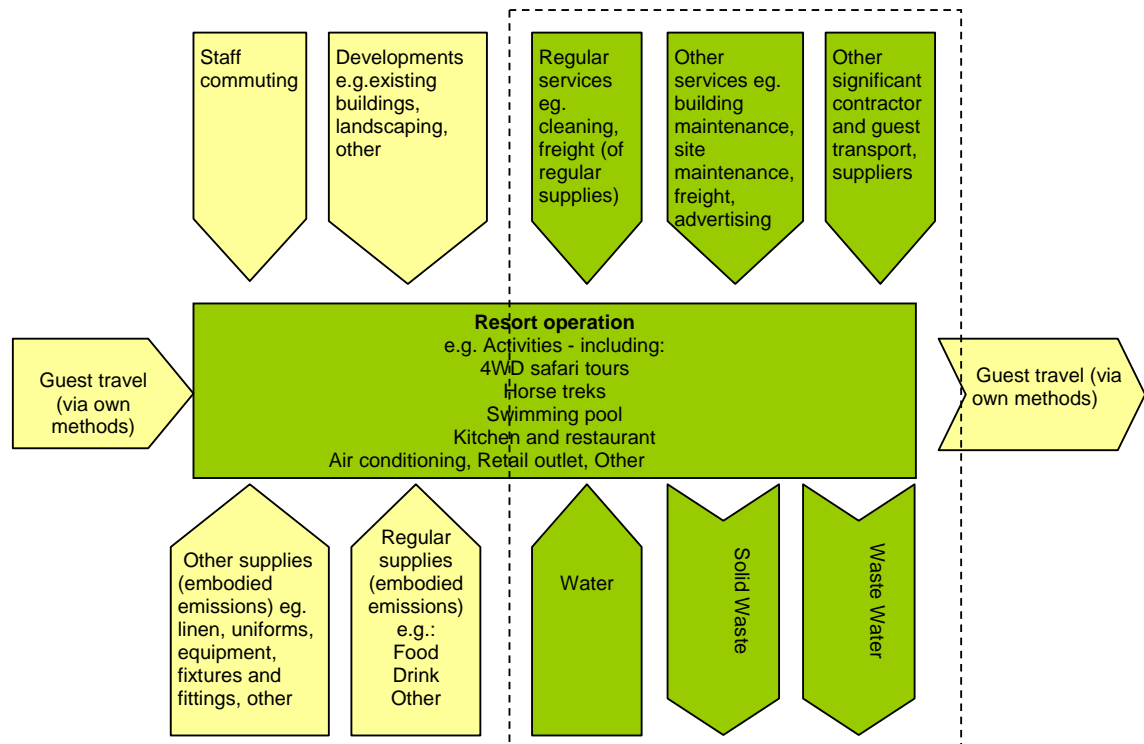


Figure 1: Organisational chart showing management status of the resort.

## Summary of CEMARS certification:



### Al Maha Desert Resort & Spa



**Figure 2:** Supply chain diagram showing emissions sources for the organisation in the context of the service (i.e. guest experience).

### Consolidation approach – Operational control

**Base year** – 1/4/2008 to 30/03/2009

**Measurement period** – The first report covers the emissions calculated for the following periods:

- 01/04/2008 to 31/03/2009 (base year)
- 01/04/2009 to 30/09/2009 (6 months)

In order to achieve recertification in 2011, verified inventory reports will be submitted for the measurement periods 1/4/2009 to 31/3/2010 plus 1/4/2010 to 31/3/2011.

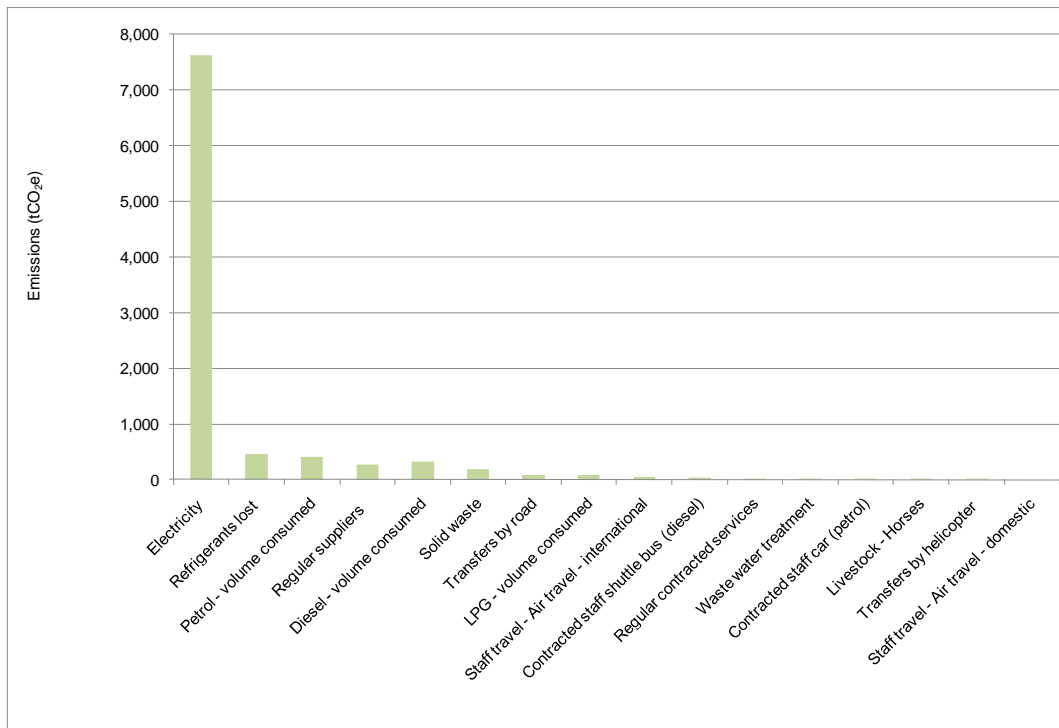
**GHG emissions source inclusions** – the diagram below shows the operational GHG emissions for Al Maha Desert Resort and Spa by emissions source for the 12 month period 1/4/2008 to 31/03/2009.

Al Maha Desert Resort and Spa's total emissions were calculated to be 9,567 tonnes of CO<sub>2</sub>e for the 12 month period 1/4/2008 to 31/03/2009, comprising of 1,274 tonnes CO<sub>2</sub>e Scope 1, 7,618 tonnes CO<sub>2</sub>e Scope 2 and 676 tonnes CO<sub>2</sub>e Scope 3 emissions. Emissions for the 6 month period 1/4/09 to 30/9/09 were calculated to be 4,643 tonnes of CO<sub>2</sub>e, comprising of 686 tonnes CO<sub>2</sub>e Scope 1, 3,554 tonnes CO<sub>2</sub>e Scope 2 and 403 tonnes CO<sub>2</sub>e Scope 3 emissions.

## Summary of CEMARS certification:



### Al Maha Desert Resort & Spa



**GHG emissions source exclusions** – The following emissions sources were excluded from the inventory for this time period:

- Staff commuting
- Embodied emissions associated with supplies and materials
- Outsourced services
- Fuel Oil (confirmed as *de minimis*)

**GHG emissions reduction commitments** – Emirates Al Maha Desert Resort and Spa has developed a GHG emissions reduction plan. Some projects in this plan include:

- Raise staff awareness on how emissions can be influenced and reduced by individual staff actions, particularly in staff areas, via the staff handbook plus during the induction process.
- Implement a system for checking how DEWA (electricity provider) collects meter readings and to confirm accuracy of consumption rates.
- Initiate an audit or review of current lighting to identify opportunities to implement energy efficient lighting
- Initiate process for turning off air conditioning in the board room and some suites that are known to be unoccupied for a significant period of time.

**Verified by** – carboNZero Programme Strategic Business Unit

**Threshold of materiality** – Excluded emissions do not exceed 5% of the total footprint for organisation and product boundary stated.

**Level of assurance** – Reasonable assurance

## Summary of CEMARS certification:

Al Maha Desert Resort & Spa



**Certification status** – CEMARS certified “organisation”.

**Certificate number** – 2010067J

**Valid until** – 30 June 2011

Emirates Al Maha Desert Resort and Spa, Dubai - Al Ain Road, Dubai, UAE. +971 4 832 9900.  
Email: [almaha@emirates.com](mailto:almaha@emirates.com), Web: [www.emirateshotelsresorts.com/al-maha/en](http://www.emirateshotelsresorts.com/al-maha/en)